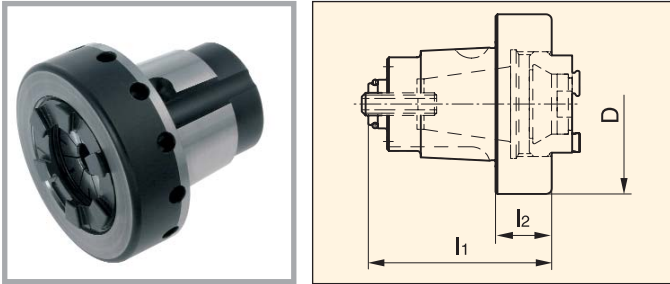


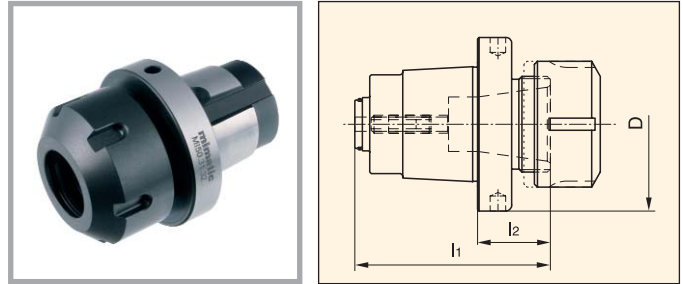
Collet Chuck DIN 6499 - Type ER

Short type, clamping nut inside



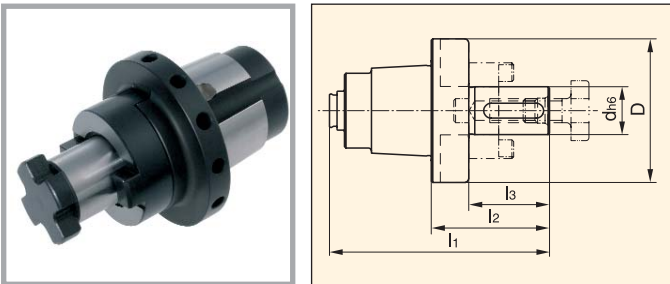
| Part Number | Size | Collet | I1 | I2 | D |
|-------------|------|--------|--------|--------|--------|
| 121479 | MI32 | ER11 | 1.634" | 0.591" | 1.654" |
| 155357 | MI32 | ER16 | 1.634" | 0.591" | 1.654" |
| 155388 | MI40 | ER16 | 1.772" | 0.433" | 1.890" |
| 155335 | MI40 | ER20 | 1.929" | 0.591" | 1.890" |
| 155367 | MI40 | ER25 | 2.165" | 0.827" | 1.890" |
| 155418 | MI50 | ER25 | 2.165" | 0.551" | 2.283" |
| 155460 | MI50 | ER32 | 2.323" | 0.709" | 2.283" |
| 155471 | MI63 | ER32 | 2.480" | 0.551" | 2.953" |
| 155496 | MI63 | ER40 | 2.717" | 0.787" | 2.953" |

Long type, clamping nut outside



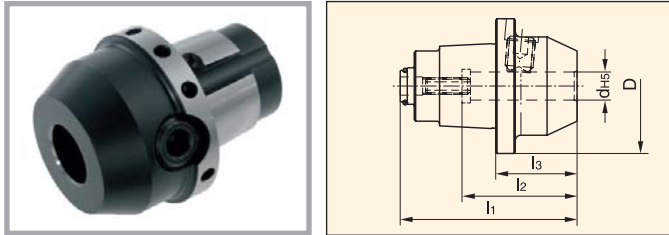
| Part Number | Size | Collet | I1 | I2 | D |
|-------------|------|--------|--------|--------|--------|
| 155358 | MI32 | ER11 | 2.461" | 1.417" | 1.654" |
| 155319 | MI32 | ER16 | 1.988" | 0.945" | 1.654" |
| 121460 | MI40 | ER16 | 2.283" | 0.945" | 1.890" |
| 121502 | MI40 | ER20 | 2.520" | 1.181" | 1.890" |
| 155448 | MI50 | ER25 | 2.571" | 1.614" | 2.283" |
| 155445 | MI50 | ER32 | 2.835" | 1.850" | 2.283" |
| 155475 | MI63 | ER32 | 3.150" | 1.850" | 2.953" |
| 155451 | MI63 | ER40 | 3.307" | 0.791" | 2.953" |

Combination Shell End Mill Arbor



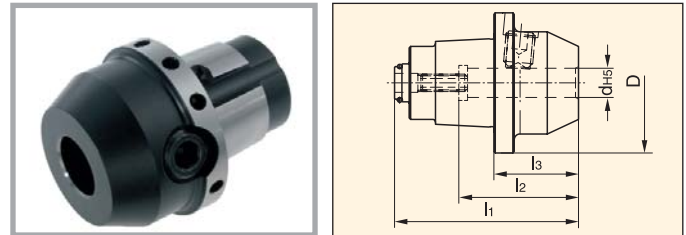
| Part Number | Size | I1 | I1 | I3 | d(h6) | D |
|-------------|------|--------|--------|--------|---------------|--------|
| 121486 | MI32 | 2.598" | 1.555" | 1.063" | 16mm (.630") | 1.654" |
| 155365 | MI40 | 2.894" | 1.555" | 0.984" | 16mm (.630") | 1.890" |
| 155447 | MI50 | 3.228" | 1.614" | 1.063" | 16mm (.630") | 2.283" |
| 155413 | MI50 | 3.465" | 1.850" | 1.220" | 22mm (.866") | 2.283" |
| SM3/4 | MI50 | 3.150" | 1.496" | 1.260" | .750" (3/4") | 2.283" |
| 155512 | MI63 | 3.780" | 1.850" | 1.220" | 22mm (.866") | 2.953" |
| 155465 | MI63 | 3.858" | 1.929" | 1.299" | 27mm (1.063") | 2.953" |

Weldon Toolholder DIN 1835 B



| Part Number | Size | I1 | I2 | I3 | d(H5) | D |
|-------------|------|--------|--------|--------|-------|--------|
| 121436 | MI32 | 2.067" | 1.457" | 1.024" | 6 | 1.654" |
| 121478 | MI32 | 2.067" | 1.457" | 1.024" | 8 | 1.654" |
| 121469 | MI32 | 2.185" | 1.614" | 1.142" | 10 | 1.654" |
| 121439 | MI32 | 2.264" | 1.811" | 1.220" | 12" | 1.654" |
| 121449 | MI32 | 2.067" | 1.457" | 1.024" | 1/4" | 1.654" |
| 121472 | MI32 | 2.185" | 1.614" | 1.142" | 3/8" | 1.654" |
| 121448 | MI32 | 2.264" | 1.811" | 1.220" | 1/2" | 1.654" |
| 155330 | MI40 | 2.362" | 1.457" | 1.024" | 6 | 1.890" |
| 155346 | MI40 | 2.362" | 1.457" | 1.024" | 8 | 1.890" |
| 155321 | MI40 | 2.480" | 1.614" | 1.142" | 10 | 1.890" |
| 155331 | MI40 | 2.559" | 1.811" | 1.220" | 12 | 1.890" |
| 155326 | MI40 | 2.559" | 1.811" | 1.220" | 14 | 1.890" |
| 155379 | MI40 | 2.677" | 1.929" | 1.339" | 16 | 1.890" |
| 121497 | MI40 | 2.362" | 1.457" | 1.024" | 1/4" | 1.890" |
| 121475 | MI40 | 2.480" | 1.614" | 1.142" | 3/8" | 1.890" |
| 121474 | MI40 | 2.559" | 1.811" | 1.220" | 1/2" | 1.890" |
| 121499 | MI40 | 2.677" | 1.929" | 1.339" | 5/8" | 1.890" |
| 155419 | MI50 | 2.559" | 1.457" | 0.945" | 6 | 2.283" |
| 155411 | MI50 | 2.598" | 1.614" | 0.984" | 8 | 2.283" |
| 155400 | MI50 | 2.756" | 1.811" | 1.142" | 10 | 2.283" |
| 155406 | MI50 | 2.874" | 1.929" | 1.260" | 12 | 2.283" |
| 155412 | MI50 | 2.874" | 1.457" | 1.260" | 14 | 2.283" |
| 155407 | MI50 | 2.913" | 1.614" | 1.299" | 16 | 2.283" |
| 155427 | MI50 | 3.071" | 1.811" | 1.457" | 20 | 2.283" |
| 121489 | MI50 | 2.559" | 1.457" | 0.945" | 1/4" | 2.283" |
| 121529 | MI50 | 1.575" | 1.614" | 1.142" | 3/8" | 2.283" |
| 121525 | MI50 | 2.874" | 1.811" | 1.260" | 1/2" | 2.283" |
| 121520 | MI50 | 2.953" | 1.929" | 1.339" | 5/8" | 2.283" |
| 121526 | MI50 | 3.071" | 2.008" | 1.457" | 3/4" | 2.283" |
| 155470 | MI63 | 3.189" | 1.457" | 1.457" | 6 | 2.953" |
| 155459 | MI63 | 3.228" | 1.457" | 1.457" | 8 | 2.953" |
| 155490 | MI63 | 3.346" | 1.614" | 1.417" | 10 | 2.953" |
| 155509 | MI63 | 3.484" | 1.811" | 1.535" | 12 | 2.953" |
| 155463 | MI63 | 3.484" | 1.811" | 1.535" | 14 | 2.953" |
| 155482 | MI63 | 3.583" | 1.929" | 1.654" | 16 | 2.953" |
| 155474 | MI63 | 3.661" | 2.008" | 1.732" | 20 | 2.953" |
| 155464 | MI63 | 4.331" | 2.323" | 2.402" | 25 | 2.953" |
| 166815 | MI63 | 3.189" | 1.457" | 1.260" | 1/4" | 2.953" |
| 166805 | MI63 | 3.346" | 1.614" | 1.417" | 3/8" | 2.953" |
| 166813 | MI63 | 3.484" | 1.811" | 1.555" | 1/2" | 2.953" |
| 166807 | MI63 | 3.583" | 1.929" | 1.654" | 5/8" | 2.953" |
| 166804 | MI63 | 3.661" | 2.008" | 1.732" | 3/4" | 2.953" |
| 166812 | MI63 | 4.331" | 2.323" | 2.402" | 1" | 2.953" |

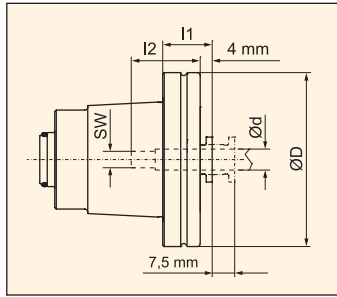
Whistle Notch Toolholder DIN 1835 E



| Part Number | Size | I1 | I2 | I3 | d(H5) | D |
|-------------|------|--------|--------|--------|-------|--------|
| 121463 | MI32 | 2.067" | 1.417" | 1.024" | 6 | 1.654" |
| 121464 | MI32 | 2.067" | 1.417" | 1.024" | 8 | 1.654" |
| 121443 | MI32 | 2.185" | 1.575" | 1.142" | 10 | 1.654" |
| 121453 | MI32 | 2.264" | 1.772" | 1.220" | 12 | 1.654" |
| 121442 | MI32 | 2.067" | 1.417" | 1.024" | 1/4" | 1.654" |
| 121485 | MI32 | 2.185" | 1.575" | 1.142" | 3/8" | 1.654" |
| 121480 | MI32 | 2.264" | 1.772" | 1.220" | 1/2" | 1.654" |
| 155369 | MI40 | 2.362" | 1.417" | 1.024" | 6 | 1.890" |
| 155363 | MI40 | 2.362" | 1.417" | 1.024" | 8 | 1.890" |
| 155370 | MI40 | 2.480" | 1.575" | 1.142" | 10 | 1.890" |
| 155364 | MI40 | 2.559" | 1.772" | 1.220" | 12 | 1.890" |
| 155333 | MI40 | 2.559" | 1.772" | 1.220" | 14 | 1.890" |
| 155382 | MI40 | 2.677" | 1.890" | 1.339" | 16 | 1.890" |
| 121492 | MI40 | 2.362" | 1.417" | 1.024" | 1/4" | 1.890" |
| 121493 | MI40 | 2.480" | 1.575" | 1.142" | 3/8" | 1.890" |
| 121455 | MI40 | 2.559" | 1.772" | 1.220" | 1/2" | 1.890" |
| 121494 | MI40 | 2.677" | 1.890" | 1.339" | 5/8" | 1.890" |
| 155416 | MI50 | 2.559" | 1.417" | 0.945" | 6 | 2.283" |
| 155401 | MI50 | 2.598" | 1.417" | 0.984" | 8 | 2.283" |
| 155383 | MI50 | 2.756" | 1.575" | 1.142" | 10 | 2.283" |
| 155408 | MI50 | 2.874" | 1.772" | 1.260" | 12 | 2.283" |
| 155435 | MI50 | 2.874" | 1.772" | 1.260" | 14 | 2.283" |
| 155436 | MI50 | 2.972" | 1.890" | 1.358" | 16 | 2.283" |
| 155384 | MI50 | 3.071" | 1.969" | 1.457" | 20 | 2.283" |
| 166816 | MI50 | 2.559" | 1.417" | 0.945" | 1/4" | 2.283" |
| 155440 | MI50 | 2.756" | 1.575" | 1.142" | 3/8" | 2.283" |
| 155434 | MI50 | 2.874" | 1.772" | 1.260" | 1/2" | 2.283" |
| 155428 | MI50 | 2.953" | 1.890" | 1.339" | 5/8" | 2.283" |
| 155385 | MI50 | 3.071" | 1.969" | 1.457" | 3/4" | 2.283" |
| 166104 | MI63 | 3.189" | 1.417" | 1.260" | 6 | 2.953" |
| 166105 | MI63 | 3.228" | 1.417" | 1.299" | 8 | 2.953" |
| 166110 | MI63 | 3.346" | 1.575" | 1.417" | 10 | 2.953" |
| 166112 | MI63 | 3.484" | 1.772" | 1.555" | 12 | 2.953" |
| 166113 | MI63 | 3.484" | 1.772" | 1.555" | 14 | 2.953" |
| 166114 | MI63 | 3.583" | 1.890" | 1.654" | 16 | 2.953" |
| 166115 | MI63 | 3.661" | 1.969" | 1.732" | 20 | 2.953" |
| 166116 | MI63 | 4.331" | 2.205" | 2.402" | 25 | 2.953" |
| 166797 | MI63 | 3.189" | 1.417" | 1.260" | 1/4" | 2.953" |
| 166799 | MI63 | 3.346" | 1.575" | 1.417" | 3/8" | 2.953" |
| 166796 | MI63 | 3.484" | 1.772" | 1.555" | 1/2" | 2.953" |
| 166803 | MI63 | 3.583" | 1.890" | 1.654" | 5/8" | 2.953" |
| 166798 | MI63 | 3.661" | 1.969" | 1.732" | 3/4" | 2.953" |
| 166795 | MI63 | 4.331" | 2.205" | 2.402" | 1" | 2.953" |

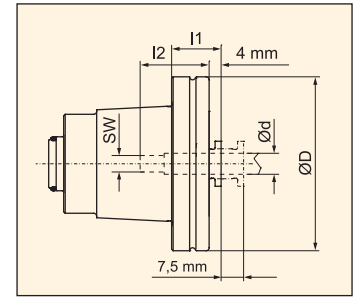
SYNAX® Tapping Quick Change Holder

without internal coolant,
with synchronization and length
compensation



| Part Number | Size | I1 | I2 | d | D | SW |
|-------------|------|--------|--------|---------------|--------|--------|
| 121510 | MI40 | 0.669" | 0.984" | 3.5mm (.138") | 1.890" | 0.106" |
| 155397 | MI40 | 0.669" | 0.984" | 4.5mm (.177") | 1.890" | 0.134" |
| 155377 | MI40 | 0.669" | 1.063" | 6mm (.236") | 1.890" | 0.193" |
| 155378 | MI40 | 0.669" | 1.063" | 8mm (.315") | 1.890" | 0.244" |
| 155403 | MI40 | 1.496" | 1.102" | 9mm (.354") | 1.890" | 0.276" |
| 121451 | MI40 | 1.496" | 1.142" | 10mm (.394") | 1.890" | 0.315" |
| 121498 | MI40 | 1.496" | 1.181" | 12mm (.472") | 1.890" | 0.354" |
| 155450 | MI50 | 0.650" | 0.984" | 3.5mm (.138") | 2.283" | 0.106" |
| 155487 | MI50 | 0.650" | 0.984" | 4.5mm (.177") | 2.283" | 0.134" |
| 155422 | MI50 | 0.650" | 1.063" | 6mm (.236") | 2.283" | 0.193" |
| 155455 | MI50 | 0.650" | 1.063" | 8mm (.315") | 2.283" | 0.244" |
| 155423 | MI50 | 0.650" | 1.102" | 9mm (.354") | 2.283" | 0.276" |
| 155466 | MI50 | 0.650" | 1.142" | 10mm (.394") | 2.283" | 0.315" |
| 155449 | MI50 | 0.650" | 1.181" | 12mm (.472") | 2.283" | 0.354" |
| 155479 | MI50 | 1.732" | 1.299" | 16mm (.630") | 2.283" | 0.472" |

with internal coolant (70 bar),
only synchronization



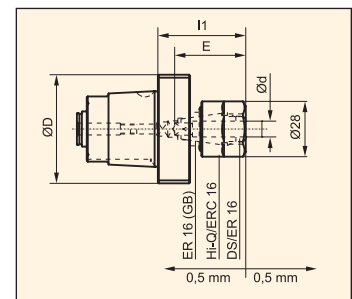
| Part Number | Size | I1 | I2 | d | D | SW |
|-------------|------|--------|--------|--------------|--------|--------|
| 155389 | MI40 | 0.669" | 1.063" | 6mm (.236") | 1.890" | 0.193" |
| 121522 | MI40 | 0.669" | 1.063" | 8mm (.315") | 1.890" | 0.244" |
| 121515 | MI40 | 1.496" | 1.102" | 9mm (.354") | 1.890" | 0.276" |
| 121504 | MI40 | 1.496" | 1.142" | 10mm (.394") | 1.890" | 0.315" |
| 121517 | MI40 | 1.496" | 1.181" | 12mm (.472") | 1.890" | 0.354" |
| 155432 | MI50 | 0.650" | 1.063" | 6mm (.236") | 2.283" | 0.193" |
| 155498 | MI50 | 0.650" | 1.063" | 8mm (.315") | 2.283" | 0.244" |
| 155473 | MI50 | 0.650" | 1.102" | 9mm (.354") | 2.283" | 0.276" |
| 155467 | MI50 | 0.650" | 1.142" | 10mm (.394") | 2.283" | 0.315" |
| 155446 | MI50 | 0.650" | 1.181" | 12mm (.472") | 2.283" | 0.354" |
| 121534 | MI50 | 1.732" | 1.299" | 16mm (.630") | 2.283" | 0.472" |

Quick Change AngleHeads™

| Part Number | Description |
|---------------|------------------------|
| MI50-STA-# | # Synax Tap Adapter |
| MI50-STA-# | # Synax Tap Adapter |
| MI50-STA-#0 | #0 Synax Tap Adapter |
| MI50-STA-#2 | #2 Synax Tap Adapter |
| MI50-STA-1/4 | 1/4 Synax Tap Adapter |
| MI50-STA-5/16 | 5/16 Synax Tap Adapter |
| MI50-STA-3/8 | 3/8 Synax Tap Adapter |
| MI50-STA-7/16 | 7/16 Synax Tap Adapter |
| MI50-STA-1/2 | 1/2 Synax Tap Adapter |
| MI50-STA-9/16 | 9/16 Synax Tap Adapter |
| MI50-STA-5/8 | 5/8 Synax Tap Adapter |

Softsynchro Chuck (Licence Emuge)

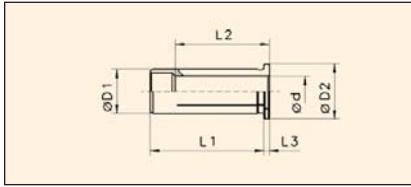
with internal coolant,
with push and pull length
compensation 0.5mm



| Part Number | Size | Collet | Thread | I1 | d | D |
|-------------|------|---------|--------|--------|------------|--------|
| 121503 | MI40 | ER-GB16 | M4-M12 | 1.870" | .177-.394" | 1.772" |
| 121530 | MI50 | ER-GB16 | M4-M12 | 1.752" | .177-.394" | 1.969" |

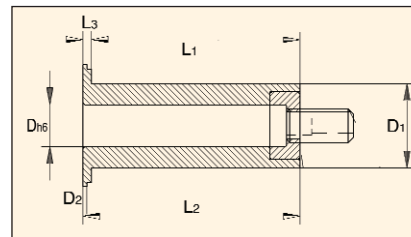
Accessories for Hydraulic Chucks

Sleeve



| Part Number | D1 | d(h6) | I1 | I2 | I3 | D2 |
|-------------|--------|-------|--------|--------|--------|--------|
| 119790 | 0.472" | 3 | 1.575" | 1.142" | 0.157" | 0.630" |
| 119793 | 0.472" | 1/8" | 1.575" | 1.142" | 0.157" | 0.630" |
| 119797 | 0.472" | 4 | 1.575" | 1.142" | 0.157" | 0.630" |
| 119798 | 0.472" | 3/16" | 1.575" | 1.142" | 0.157" | 0.630" |
| 119819 | 0.472" | 5 | 1.575" | 1.142" | 0.157" | 0.630" |
| 119812 | 0.472" | 6 | 1.575" | 1.417" | 0.157" | 0.630" |
| 119813 | 0.472" | 1/4" | 1.575" | 1.417" | 0.157" | 0.630" |
| 119791 | 0.472" | 7 | 1.575" | 1.457" | 0.157" | 0.630" |
| 119799 | 0.472" | 5/16" | 1.575" | 1.457" | 0.157" | 0.630" |
| 119810 | 0.472" | 8 | 1.575" | 1.457" | 0.157" | 0.630" |
| 119792 | 0.472" | 9 | 1.575" | 1.457" | 0.157" | 0.630" |
| 119815 | 0.472" | 3/8" | 1.575" | 1.575" | 0.157" | 0.630" |
| 119814 | 0.472" | 10 | 1.575" | 1.575" | 0.157" | 0.630" |
| 119816 | 0.787" | 3 | 1.969" | 1.102" | 0.157" | 0.984" |
| 119823 | 0.787" | 1/8" | 1.969" | 1.102" | 0.157" | 0.984" |
| 119817 | 0.787" | 4 | 1.969" | 1.102" | 0.157" | 0.984" |
| 119837 | 0.787" | 3/16" | 1.969" | 1.102" | 0.157" | 0.984" |
| 119800 | 0.787" | 5 | 1.969" | 1.102" | 0.157" | 0.984" |
| 119801 | 0.787" | 6 | 1.969" | 1.417" | 0.157" | 0.984" |
| 119822 | 0.787" | 1/4" | 1.969" | 1.417" | 0.157" | 0.984" |
| 119818 | 0.787" | 7 | 1.969" | 1.496" | 0.157" | 0.984" |
| 119839 | 0.787" | 5/16" | 1.969" | 1.457" | 0.157" | 0.984" |
| 119820 | 0.787" | 8 | 1.969" | 1.457" | 0.157" | 0.984" |
| 119802 | 0.787" | 9 | 1.969" | 1.496" | 0.157" | 0.984" |
| 119838 | 0.787" | 3/8" | 1.969" | 1.496" | 0.157" | 0.984" |
| 119824 | 0.787" | 10 | 1.969" | 1.575" | 0.157" | 0.984" |
| 119825 | 0.787" | 11 | 1.969" | 1.575" | 0.157" | 0.984" |
| 119830 | 0.787" | 7/16" | 1.969" | 1.772" | 0.157" | 0.984" |
| 119826 | 0.787" | 12 | 1.969" | 1.772" | 0.157" | 0.984" |
| 119821 | 0.787" | 1/2" | 1.969" | 1.772" | 0.157" | 0.984" |
| 119827 | 0.787" | 14 | 1.969" | 1.772" | 0.157" | 0.984" |
| 119846 | 0.787" | 9/16" | 1.969" | 1.772" | 0.157" | 0.984" |
| 119829 | 0.787" | 5/8" | 1.969" | 1.890" | 0.157" | 0.984" |
| 119828 | 0.787" | 16 | 1.969" | 1.890" | 0.157" | 0.984" |
| 119847 | 0.984" | 3 | 2.205" | 1.142" | 0.157" | 1.181" |
| 119848 | 0.984" | 4 | 2.205" | 1.142" | 0.157" | 1.181" |
| 119831 | 0.984" | 5 | 2.205" | 1.142" | 0.157" | 1.181" |
| 119849 | 0.984" | 6 | 2.205" | 1.457" | 0.157" | 1.181" |
| 119832 | 0.984" | 7 | 2.205" | 1.457" | 0.157" | 1.181" |
| 119833 | 0.984" | 8 | 2.205" | 1.457" | 0.157" | 1.181" |
| 119834 | 0.984" | 9 | 2.205" | 1.496" | 0.157" | 1.181" |
| 119850 | 0.984" | 10 | 2.205" | 1.575" | 0.157" | 1.181" |
| 119835 | 0.984" | 12 | 2.205" | 1.811" | 0.157" | 1.181" |

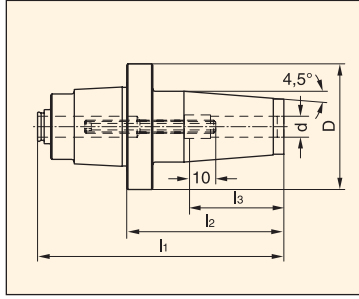
| Part Number | D1 | d(h6) | I1 | I2 | I3 | D2 |
|-------------|--------|--------|--------|--------|--------|--------|
| 119851 | 0.984" | 14 | 2.205" | 1.850" | 0.157" | 1.181" |
| 119836 | 0.984" | 16 | 2.205" | 1.890" | 0.157" | 1.181" |
| 119841 | 0.984" | 18 | 2.205" | 1.890" | 0.157" | 1.181" |
| 119842 | 0.984" | 20 | 2.205" | 1.969" | 0.157" | 1.181" |
| 119844 | 1.260" | 6 | 2.362" | 1.417" | 0.157" | 1.417" |
| 119857 | 1.260" | 1/4" | 2.362" | 1.417" | 0.157" | 1.417" |
| 119845 | 1.260" | 7 | 2.362" | 1.457" | 0.157" | 1.417" |
| 119879 | 1.260" | 5/16" | 2.362" | 1.417" | 0.157" | 1.417" |
| 119852 | 1.260" | 8 | 2.362" | 1.417" | 0.157" | 1.417" |
| 119855 | 1.260" | 9 | 2.362" | 1.457" | 0.157" | 1.417" |
| 119884 | 1.260" | 3/8" | 2.362" | 1.457" | 0.157" | 1.417" |
| 119864 | 1.260" | 10 | 2.362" | 1.575" | 0.157" | 1.417" |
| 119853 | 1.260" | 11 | 2.362" | 1.575" | 0.157" | 1.417" |
| 119858 | 1.260" | 12 | 2.362" | 1.772" | 0.157" | 1.417" |
| 119856 | 1.260" | 1/2" | 2.362" | 1.772" | 0.157" | 1.417" |
| 119859 | 1.260" | 3/16" | 2.362" | 1.772" | 0.157" | 1.417" |
| 119865 | 1.260" | 14 | 2.362" | 1.811" | 0.157" | 1.417" |
| 119854 | 1.260" | 15/16" | 2.362" | 1.811" | 0.157" | 1.417" |
| 119861 | 1.260" | 5/8" | 2.362" | 1.811" | 0.157" | 1.417" |
| 119866 | 1.260" | 16 | 2.362" | 1.890" | 0.157" | 1.417" |
| 119870 | 1.260" | 18 | 2.362" | 1.929" | 0.157" | 1.417" |
| 119878 | 1.260" | 3/4" | 2.362" | 1.969" | 0.157" | 1.417" |
| 119877 | 1.260" | 20 | 2.362" | 1.969" | 0.157" | 1.417" |
| 119867 | 1.260" | 25 | 2.362" | 2.205" | 0.157" | 1.417" |



with horizontal adjustment

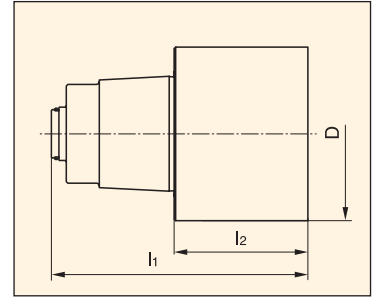
| Part Number | D1 | d(h6) | I1 | I2 | I3 | D2 |
|-------------|--------|-------|--------|--------|----|--------|
| 119909 | 0.787" | 6 | 1.969" | 2.047" | - | 1.102" |
| 119889 | 0.787" | 8 | 1.969" | 2.047" | - | 1.102" |
| 152696 | 0.787" | 10 | 1.969" | 2.047" | - | 1.102" |
| 119910 | 0.787" | 12 | 1.969" | 2.047" | - | 1.102" |
| 119901 | 0.787" | 14 | 1.969" | 2.047" | - | 1.102" |
| 119911 | 0.787" | 16 | 1.969" | 2.047" | - | 1.102" |
| 119892 | 0.787" | 18 | 1.969" | 2.047" | - | 1.102" |
| 119893 | 0.984" | 10 | 2.205" | 2.323" | - | 1.260" |
| 119912 | 0.984" | 12 | 2.205" | 2.323" | - | 1.260" |
| 119894 | 0.984" | 14 | 2.205" | 2.323" | - | 1.260" |
| 119895 | 0.984" | 16 | 2.205" | 2.323" | - | 1.260" |
| 167144 | 0.984" | 18 | 2.205" | 2.323" | - | 1.260" |
| 167045 | 0.984" | 20 | 2.205" | 2.323" | - | 1.260" |

Shrink Fit Chuck



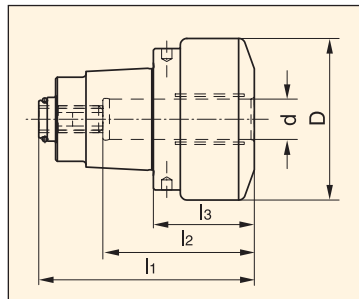
| Part Number | Size | I1 | I2 | I3 | d(h6) | D |
|-------------|------|--------|--------|--------|--------------|--------|
| 155381 | MI40 | 3.701" | 2.362" | 1.417" | 8mm (.315") | 1.890" |
| 121482 | MI40 | 3.701" | 2.362" | 1.654" | 10mm (.394") | 1.890" |
| 155334 | MI40 | 3.898" | 2.559" | 1.850" | 12mm (.472") | 1.890" |
| 121501 | MI40 | 4.094" | 2.756" | 1.969" | 16mm (.630") | 1.890" |
| 155421 | MI50 | 3.976" | 2.362" | 1.417" | 8mm (.315") | 2.283" |
| 155409 | MI50 | 3.976" | 2.362" | 1.654" | 10mm (.394") | 2.283" |
| 155444 | MI50 | 4.137" | 2.559" | 1.850" | 12mm (.472") | 2.283" |
| 155438 | MI50 | 4.137" | 2.559" | 1.850" | 14mm (.551") | 2.283" |
| 155430 | MI50 | 4.370" | 2.756" | 1.969" | 16mm (.630") | 2.283" |
| 155431 | MI50 | 4.567" | 2.953" | 1.969" | 18mm (.709") | 2.283" |
| 155454 | MI50 | 4.567" | 2.953" | 2.047" | 20mm (.787") | 2.283" |

Blank



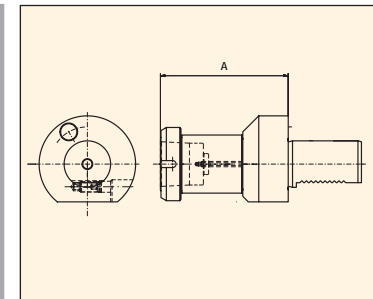
| Part Number | Size | I1 | I2 | D |
|-------------|------|--------|--------|--------|
| 121457 | MI32 | 3.012" | 1.969" | 1.654" |
| 166791 | MI40 | 3.701" | 2.362" | 1.890" |
| 166789 | MI50 | 4.370" | 2.756" | 2.283" |
| 121557 | MI63 | 5.079" | 3.150" | 2.953" |

Hydraulic Chuck



| Part Number | Size | I1 | I2 | I3 | d(h6) | D |
|-------------|------|--------|--------|--------|--------------|--------|
| 155391 | MI40 | 2.520" | 1.772" | 1.181" | 12mm (.472") | 1.890" |
| 155417 | MI50 | 2.795" | 2.047" | 1.181" | 20mm (.787") | 2.283" |

Tool Presetting Unit



| Part Number | Size | VDI | A |
|-------------|------|--------|-------|
| 155368 | MI40 | 2.520" | 108mm |
| 155356 | MI50 | 2.795" | 110mm |